

## APPLICATION PROFILE

# DESERT OIL REFINERY

## Lubricating Oil Systems

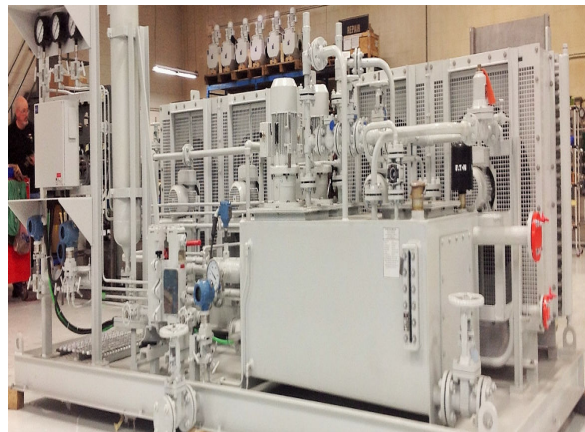
Challenge: **DESERT LUBE OIL SYSTEM FOR MULTIPHASE OIL TRANSFER PUMPS**

Location: **CANADA/UNITED ARAB EMIRATES**

Flodraulic's RHM Division was selected to build a complex special purpose API 614 Ch. 3 lubricating oil system, designed to serve a twenty-five year mission life in an outdoor corrosive desert environment.

The RHM system provided lubrication, cooling and filtration to the rotating groups of 400gpm, 750psi pumps sending well-produced fluids 21kms from the desert production facility to a remote de-gassing station.

The totally redundant system included two 18gpm vertical pumps, dual air to oil heat exchangers each with dual fan motors and a stainless steel accumulator for pump changeover. The dual ASME air to oil heat exchangers incorporated 4 x 100% capabilities to ensure quadruple redundancy. Electrical devices and wiring conform to ATEX/IEC Zone 2 specifications. All piping and fabricated materials are 316 stainless steel which had to be completely sandblasted and specially coated and painted for to withstand the outdoor desert environment.



**USA 800-545-5414** [info@flodraulicgroup.com](mailto:info@flodraulicgroup.com)  
**CAN 800-361-6209** [info@flodraulic.com](mailto:info@flodraulic.com)